

Zen Tarot for Palm OS User Guide

Version 1.1.1

Published on October 13, 2003



www.hudren.com

Copyright (c) 2002-2003 Hudren Andromeda Connection. All rights reserved.

The HAC logo is a trademark of Hudren Andromeda Connection. Other company and product names may be trademarks or registered trademarks of their respective holders.

Table of Contents

INTRODUCTION	4
REQUIREMENTS	5
INSTALLATION.....	6
UPGRADING ZEN TAROT	8
UNINSTALLING ZEN TAROT	8
GETTING STARTED	9
BROWSE EXERCISE.....	9
LAYOUT EXERCISE.....	10
USING ZEN TAROT	11
PREFERENCES	12
IMAGES	12
LANGUAGES	13
BEAM ZEN TAROT	14
COPY ZEN TAROT	14
USING BROWSE MODE.....	15
PICKING CARDS	16
VIEWING IMAGES	16
VIEWING DESCRIPTIONS	17
USING LAYOUT MODE	18
CREATING A NEW LAYOUT	18
REVIEWING THE LAYOUT	19
VIEWING IMAGES	20
VIEWING DESCRIPTIONS	20
ADDING CARDS TO THE LAYOUT	21
SAVING THE LAYOUT	21
BEAMING THE LAYOUT	22
FREQUENTLY ASKED QUESTIONS	23
GENERAL FAQ	23
PALM OS-RELATED FAQ.....	24
REVISION HISTORY	25
VERSION 1.0	25

VERSION 1.1	25
REGISTRATION.....	27
SUPPORT	29
WEB LINKS.....	29
ABOUT OSHO.....	30

Introduction

Zen Tarot for Palm OS is an electronic adaptation of *Osho Zen Tarot - The Transcendental Game of Zen*, a tool that helps facilitate self discovery and inner exploration. Osho Zen Tarot is not a traditional tarot in the sense that you play with prediction, but rather draws from the wisdom of Zen and focuses on the present, mirroring what is here and now without judgment and comparison.

Requirements

Zen Tarot is designed to run on handhelds with Palm OS™ version 3.0 and later including (but not limited to) these devices:

- Palm III, V, VII, m100, m500, i700, Zire, and Tungsten series
- Handspring Visor and Treo series
- Sony CLIE series
- IBM WorkPad series
- TRG Products TRGpro, Handera 330
- Kyocera Smartphone series
- Samsung I300 series
- Acer s-Series
- Garmin iQue series

Additionally, you must have at least 281 KB RAM free to install this program and one text database. This amount is increased to 567 KB if installing the lowest definition image database.

Note: This program is not compatible with the Pilot 1000, Pilot 5000, PalmPilot, and PalmPilot Professional devices.

Installation

Installation is done through the *Palm Desktop* software that shipped with your handheld. Check to make sure your handheld device meets the basic requirements in the Requirements section of this guide. Most importantly, make sure you have enough free memory for installing this software as the image databases tend to be large.

The Zen Tarot software consists of three components: the program, text databases, and image databases. You must install the program and at least one text database, but the image databases are optional. The program downloads contain the English program, one text database for the indicated language, and the basic 4-level monochrome or grayscale image database. The text databases contain descriptions for each of the Osho Zen Tarot cards, while the image databases contain pictures for these cards.

Additional Language and Image Pack downloads are available at the www.hudren.com website. These additional downloads are optional and can be installed now or at a later time. Installing more than one text database allows you to switch back and forth between those languages. The Image Pack downloads contain image databases that take advantage of advanced displays (such as color), but require more memory to store on your handheld.

Since there are many files distributed with Zen Tarot, they have been combined and packaged into archive files for convenient downloading. These archive files are available in several formats: .ZIP which is suitable for all operating systems, .EXE which is a self-extracting executable for Windows, .SIT which is common for Mac OS, and .TGZ for Linux and other Unix-based computers. The first step is to decompress these files onto the hard drive of your desktop computer.

If you downloaded an .EXE file, double-click it in the Windows Explorer window. This will prompt you to decompress the files into the **c:\zentarot** directory. Click the **Unzip** button, and when it's finished, click the **Close** button.

If you downloaded any other type of archive, you'll need to use an appropriate utility to decompress these files.

Depending on which archive file you downloaded, you will find some (but generally not all) of the following files:

- readme.htm - readme file with instructions to get you started
- license.htm - software license agreement
- guide.pdf - user guide

- ZenTarot.prc - English program
- ZenTxtEn.prc - English text database
- ZenTxtFr.prc - French text database
- ZenTxtDe.prc - German text database
- ZenTxtIt.prc - Italian text database
- ZenTxtEs.prc - Spanish text database
- ZenImg1a.prc - 4-level grayscale image database
- ZenImg2a.prc - 16-level grayscale image database
- ZenImg3a.prc - 256 color (web palette) image database
- ZenImg4a.prc - 256 color (optimized palette) image database
- ZenImg5a.prc - 64,000 color image database

For installation from a Windows-based PC, you will use the *Palm Install Tool* to transfer the Zen Tarot program and associated databases onto your handheld:

1. Start the *Install Tool* program.
2. In the User drop down list, select the user name that corresponds to your handheld.
3. Click the **Add** button.
4. Navigate to the directory where you decompressed the Zen Tarot files (**c:\zentarot**).
5. Select the program file named **ZenTarot.prc** and click the **Open** button.
6. A text database filename starts with **ZenTxt** and ends with **.prc** (filename extensions may not be viewable on some computers). To install the text descriptions, click the **Add** button, select a text database file, and click the **Open** button.
7. An image database filename starts with **ZenImg** and ends with **.prc**. To install the card images, click the **Add** button, select an image database file, and click the **Open** button.
8. Click the **Done** button.

9. Synchronize to install the program and associated databases onto your handheld.
Zen Tarot is a large program and this synchronization may take a few minutes, but this operation only needs to be performed once.

Once the program has been installed on your handheld device, you may delete the directory containing the Zen Tarot files on your hard drive, although you may want to read or save the user guide (guide.pdf) before deleting these files.

If you are experiencing any problems with the installation, please check your handheld's manual for information about installing third-party software.

Upgrading Zen Tarot

Upgrading to the latest version of Zen Tarot is as simple as installing the **ZenTarot.prc** file using the same method as originally installing Zen Tarot. You do not need to remove the existing version before installing the new version, and you do not need to re-install the text or image databases.

Registered users are entitled to use all future versions of Zen Tarot, so be sure to periodically check our website for free updates.

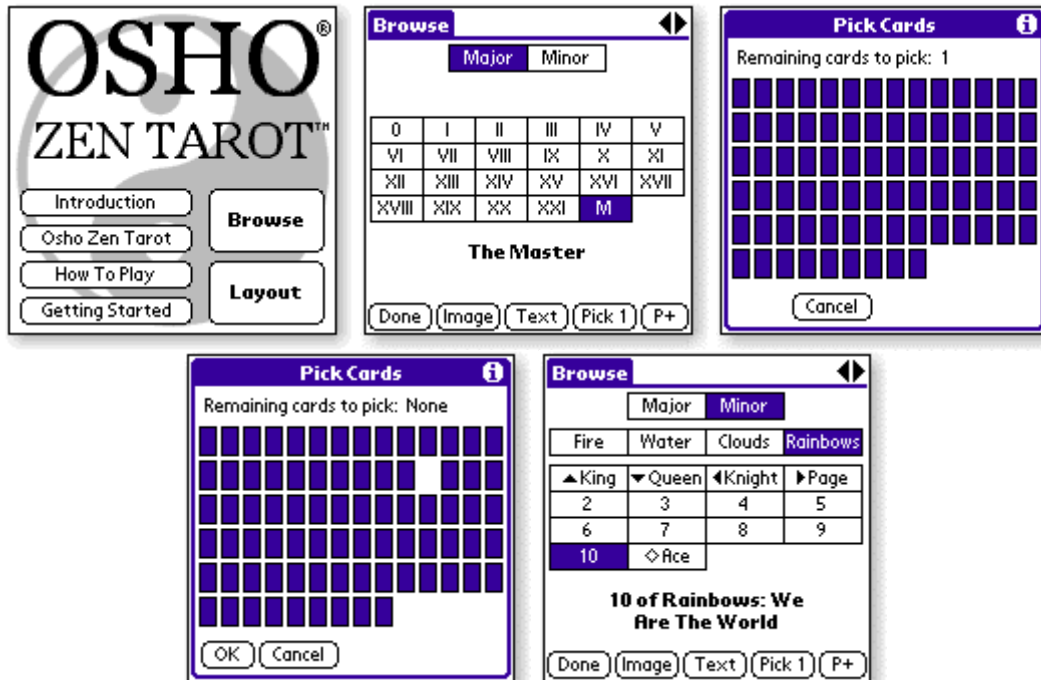
Uninstalling Zen Tarot

Uninstalling or removing Zen Tarot is handled by the built-in Launcher application on your handheld device. Choose the Delete menu option, select Zen Tarot from the list of installed applications, and tap the Delete button to completely remove the Zen Tarot application, text, and image databases. Your preferences and registration information will also be removed and will need to be re-entered when the application is installed again at a later time.

Getting Started

Okay, so you don't want to read this whole manual before trying Zen Tarot. No problem, here are two simple exercises to get you started. If you haven't installed the program yet, see the Installation section for instructions.

Browse Exercise



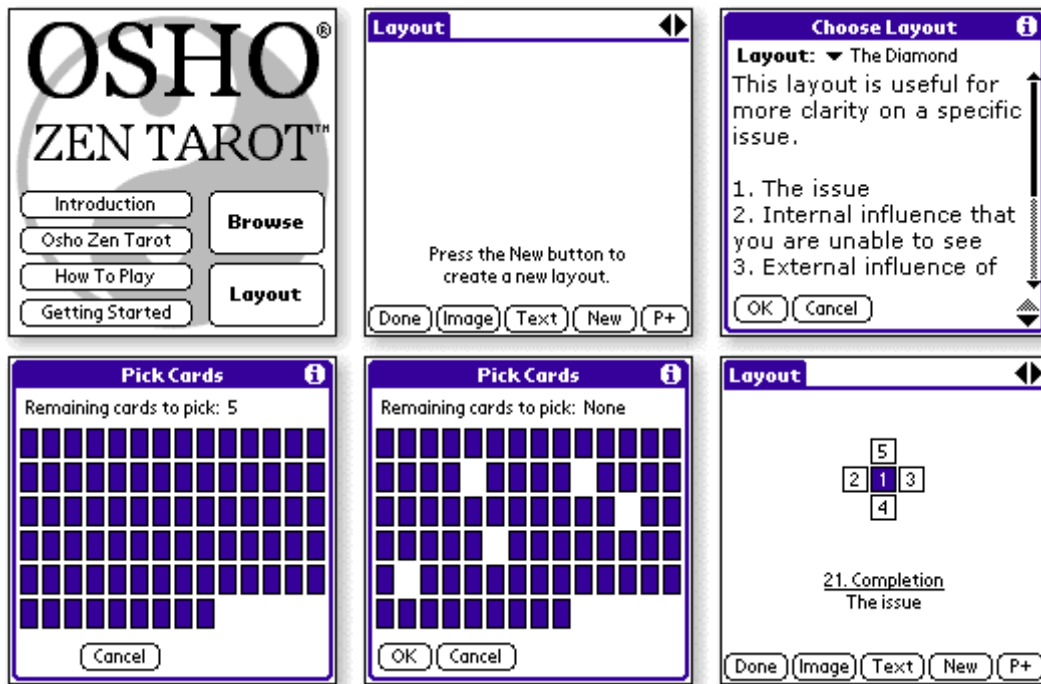
1. From the title screen, tap the **Browse** button.
2. Tap the **Pick 1** button.
3. Tap on one of the face down cards from the shuffled deck.
4. Tap the **OK** button to see which card you've picked.

You've just picked a single card which is great for receiving a daily message. To learn more about the card you've picked, press the **Image** and **Text** buttons. Tapping the **Done** button while viewing the image or description will return you to the Browse screen.

Tapping the **Done** button on the Browse screen will return you to the main title screen.

Tip: Adjust the display contrast or brightness for optimal viewing of the card images.

Layout Exercise



1. From the main title screen, tap the **Layout** button.
2. Tap the **New** button to create a new layout.
3. Tap the **OK** button to choose the displayed layout.
4. Tap on the required number of cards from the shuffled deck.
5. Tap the **OK** button to see the cards you've picked for layout you've chosen.

You've just created a new layout and now you're ready to view the cards selected for the reading. Tapping on the numbered boxes will display the name of the card and meaning of the position of that card within the layout. Tapping on the **Image** and **Text** buttons will display detailed information about the currently selected card.

The scroll buttons in the upper right corner of the screen will select the previous and next card *within the layout*. Try it while viewing the entire layout, an image, or a description.

Tapping the **Done** button on the Layout screen will return you to the main title screen.

Using Zen Tarot

This program was designed to duplicate the experience of using the actual deck and contains two modes of operation: Browse and Layout. Browse mode allows you to work with the cards in an informal way, while Layout mode provides support for more structured readings. This section provides information about using the Zen Tarot program in general, while the next two sections, Using Browse Mode and Using Layout Mode, discuss these modes of the program in detail.



Language-specific background information about the this tarot deck can be viewed by tapping on the **Introduction**, **Osho Zen Tarot**, and **How To Play** buttons of the main title screen. This text was taken from the instructional book that accompanies the Osho Zen Tarot deck and provides valuable insights into understanding the deck and its usage.

The **Getting Started** button displays basic information about how the software was designed and is a useful primer for using Zen Tarot.

The **Browse** and **Layout** buttons will take you to the Browse and Layout screens, respectively.

The *Options* menu can be accessed by pressing the menu silkscreen button or by tapping on the upper portion of the main title screen.

Note: You can always return to the main title screen by pressing the **Done** button once or twice. (If you are in a dialog, you may need to press the **OK** or **Cancel** button first.)

Preferences



The *Font* preference specifies which font to use when displaying card descriptions and the other texts accessible from the main title screen. Zen Tarot includes an additional, larger font for easier reading on low-resolution displays.

The *Global Find* option determines whether the card descriptions should be included in the search when the system Find dialog is invoked, regardless of whether Zen Tarot is the currently running program. Only the card descriptions in the currently active language will be searched.

Invoking the Find dialog while using Zen Tarot with the *Global Find* option disabled will display a prompt asking to enable this option. If searching the card descriptions was not intended, press the **Leave disabled** button.

Images



The Images dialog displays all of the currently installed image databases. The currently active set of images is indicated by the highlighted or selected database. The amount of memory required to store each database is shown in parenthesis.

The **Best** button will instruct Zen Tarot to always search for the highest quality image database that can be displayed on that particular device. This is the default mode of operation and allows image databases to be stored and used on removable flash memory expansion cards or modules and on VFS-enabled expansion cards.

One scenario this supports is to have lower quality images stored in internal memory (RAM) and higher quality images stored on an expansion card. When the expansion card is inserted, the higher quality images would be displayed, otherwise, the lower quality images would be displayed.

Another example would be to have the program, some text databases, and both monochrome and color images on an expansion card. When the card is inserted into a monochrome device, the Zen Tarot program would display monochrome images, and when inserted into a color device, the color images would be displayed.

The **Delete** button will remove the image database making more memory available for other applications. An image database can always be re-installed at a later time. Image databases stored in Flash cannot be deleted using this dialog.

Pressing the **OK** button will close the dialog and select the currently highlighted database for displaying images.

Pressing the **Cancel** button will close the dialog without changing the currently active image database.

Languages



The Languages dialog displays all of the currently installed text databases. The currently active language is indicated by the highlighted or selected database. The amount of memory required to store each database is shown in parenthesis.

The **Delete** button will remove the text database making more memory available for other applications. A text database can always be re-installed at a later time. At least one text database must remain in order to use the Browse and

Layout modes. Text databases stored in Flash cannot be deleted using this dialog.

Pressing the **OK** button will close the dialog and select the currently highlighted database for displaying card descriptions.

Pressing the **Cancel** button will close the dialog without changing the currently active text database.

Beam Zen Tarot



Beaming Zen Tarot from the Palm OS Launcher will only send the program, not the text or image databases. Using the *Beam Zen Tarot* menu option from the main title screen, you can beam any of the program, text, or image databases to another Palm OS-based handheld.

Start by selecting the first component you'd like to send and tap the **Beam** button. Repeat this procedure until the desired components have been transmitted, then tap the **Done** button

to close this dialog.

It is not possible for the beamed databases to be sent directly to an expansion card on the receiving device; they are always transferred to internal memory.

Copy Zen Tarot



The Copy Zen Tarot dialog facilitates copying individual Zen Tarot program, text, and image databases to and from VFS-enabled expansion cards. If you have more than one card installed at the same time, start by selecting the volume you would like to work with. All of the databases currently located in internal memory and on the inserted expansion card are listed.

A database can be copied from one location to the other by first selecting one of the listed databases and then tapping the **Copy** button. Selecting a database located in internal memory will copy that database to the card, and selecting a database located on the card will copy that database to internal memory.

You may also delete a database by selecting it and tapping the **Delete** button.

The **Move** button is a convenience for copying and then deleting a database. If the copy was not successful, the database will not be deleted.

You cannot use this dialog to copy the Zen Tarot program database to internal memory or delete it from internal memory; use the Palm OS Launcher or a third-party application instead.

Note: This dialog does not support copying from one expansion card directly to another. You must first copy the database(s) to internal memory, then to the other card.

Using Browse Mode



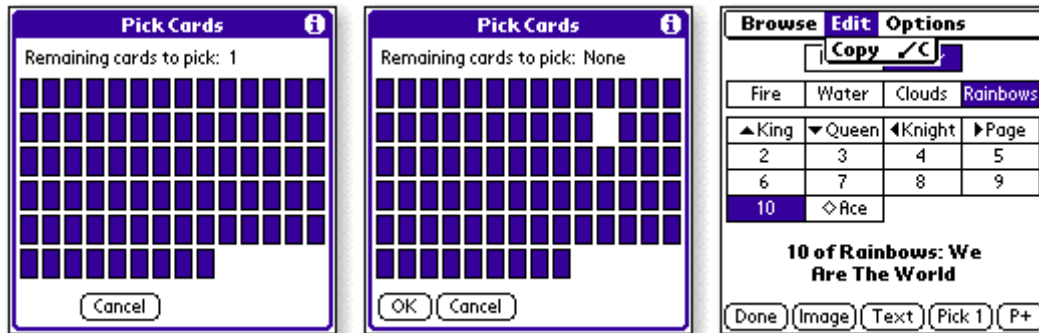
Browse mode was designed to allow you to work with the tarot deck in an informal way, just as if the actual cards were in your hand. You can quickly and easily find any card in the deck using this screen.

If you know the card suit or face value, just tap on **Major** or **Minor** to select the Major Arcana or Minor Arcana. When the Minor Arcana is selected, you can also tap on the desired suit. You can change the active card by tapping on any of the displayed card values.

If you know the name of the card, select the *List* menu option to display an alphabetical list of all of the cards. Selecting one of these cards will make that card the active card.

Pressing the previous and next buttons (in the upper-right corner), will change to the previous and next card *within the deck*.

Picking Cards



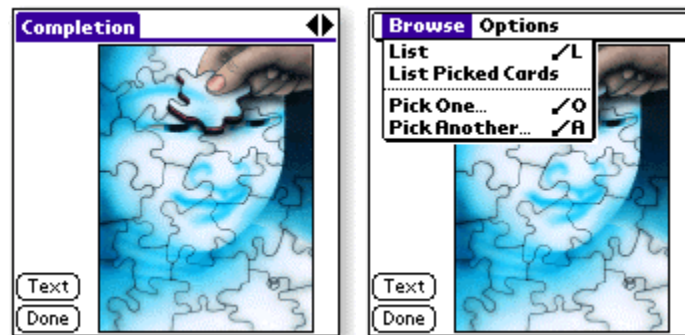
Pressing the **Pick 1** button will shuffle the deck and display the cards face down so that you can pick a single card from the deck. This is the same as the *Pick One* menu option.

Pressing the **P+** button will display the face down cards without shuffling them so that you may pick another card. Any previously picked cards will not be shown. This is the same as the *Pick Another* menu option.

The *List Picked Cards* menu option will list the cards that have been picked, in the order they were picked, allowing you to review the previously picked cards or to return to review one of these cards.

The *Copy* menu item will copy a list of the cards that have been picked to the clipboard so that this information can be transferred to another application for saving or printing.

Viewing Images

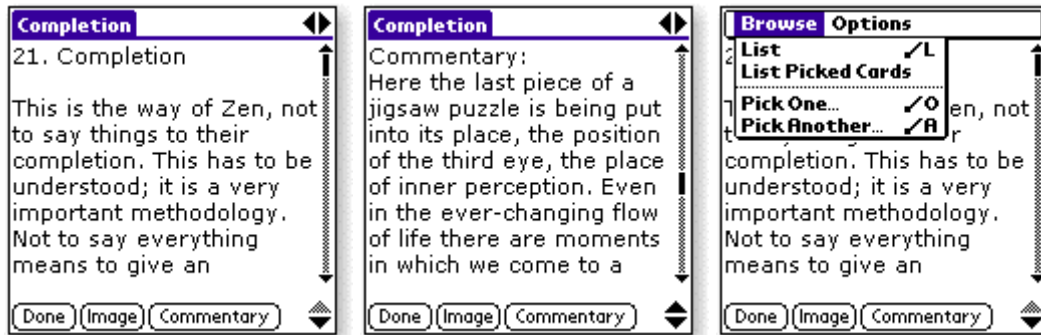


Pressing the **Image** button on the Browse screen will display the picture for the currently selected card.

Pressing the **Text** button will display the card description.

Pressing the **Done** button will return you to the Browse screen.

Viewing Descriptions



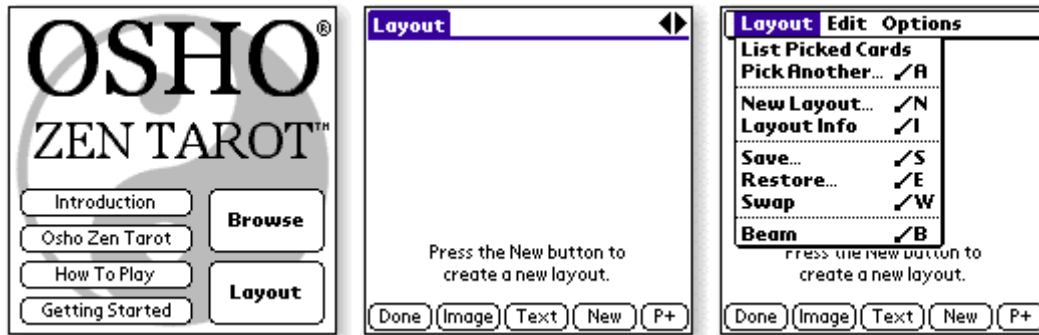
Pressing the **Text** button on the Browse screen will display the description for the currently selected card.

Pressing the **Image** will display the card image.

Pressing the **Commentary** button will scroll to the commentary section of the card description.

Pressing the **Done** button will return you to the Browse screen.

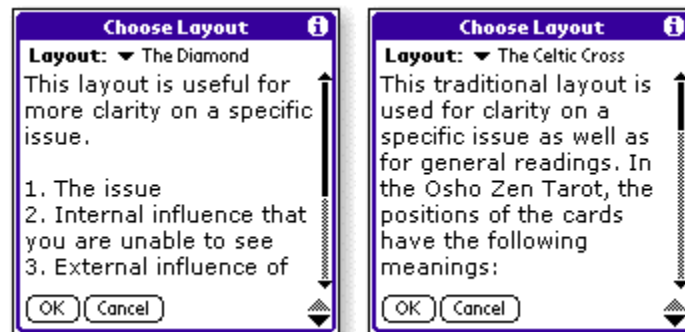
Using Layout Mode



The Layout mode contains several different layouts that can be used for more formal readings. The layouts are described in the Choose Layout dialog which is displayed when creating a new layout.

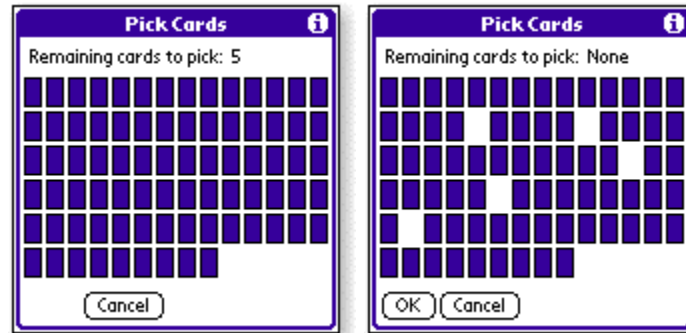
A variety of layouts is provided, as different layouts are better suited for different purposes. Experimenting with these different layouts will help you to determine which ones work the best for your situations and mindset.

Creating a New Layout



Choose the *New Layout* menu option or press the **New** button to create a new reading using one of the built-in layouts. This will display the Choose Layout dialog where you can browse and select the layout you'd like to use for the reading.

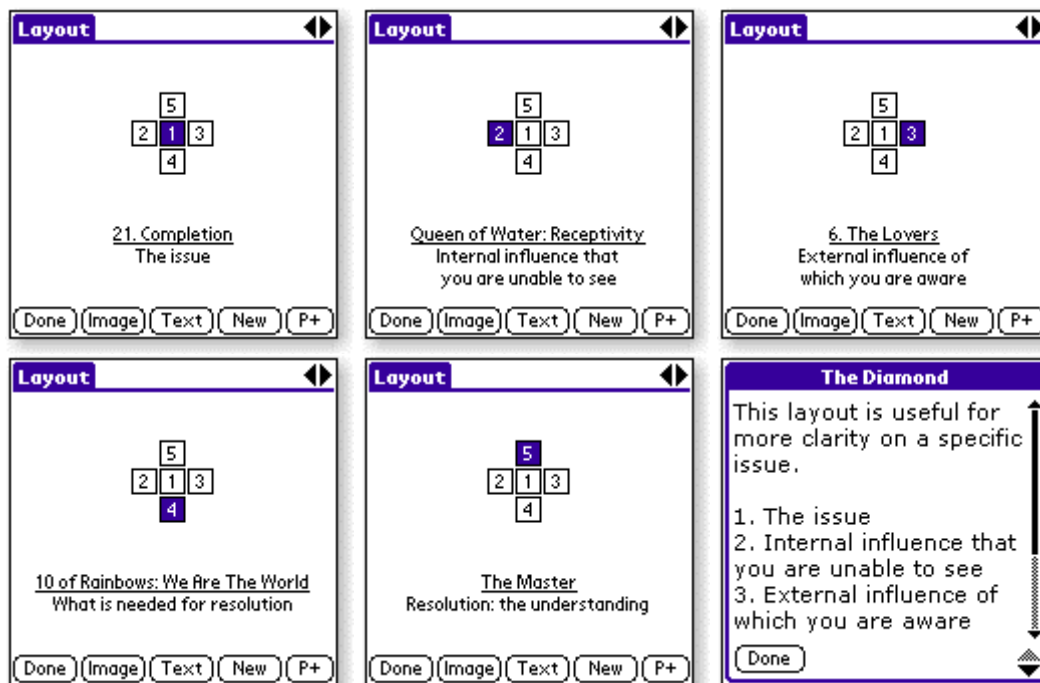
Once you've decided on the layout, press the **OK** button to pick the cards for the reading. Pressing the **Cancel** button will return you to the previously created layout.



After selecting the layout, the Pick Cards dialog is displayed with all of the cards shuffled. The notice at the top of the dialog indicates how many cards still need to be picked for the new reading (this varies depending on which layout was selected).

When the required number of cards have been picked, the **OK** button will appear. Pressing this button will display the picked cards in the specified layout. Pressing the **Cancel** button, at any time, will return you to the previously created layout.

Reviewing the Layout



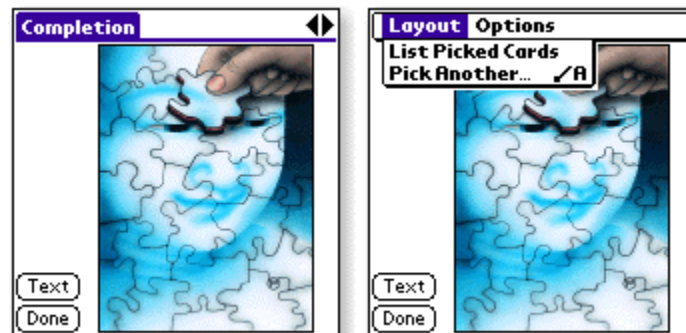
Each layout has a different number of cards, with a different context for each card depending on the position of the card within the layout. Tapping on any numbered card within the layout will display the name and suit of that card along with the meaning of that position within the layout.

The *List Picked Cards* menu option will display a list of the cards picked for the layout, in the order they were picked. Selecting any of these cards will change the currently active card.

Choosing the *Layout Info* menu option will display the description of the layout.

Pressing the previous and next buttons (in the upper-right corner), will change to the next and previous card within the layout.

Viewing Images

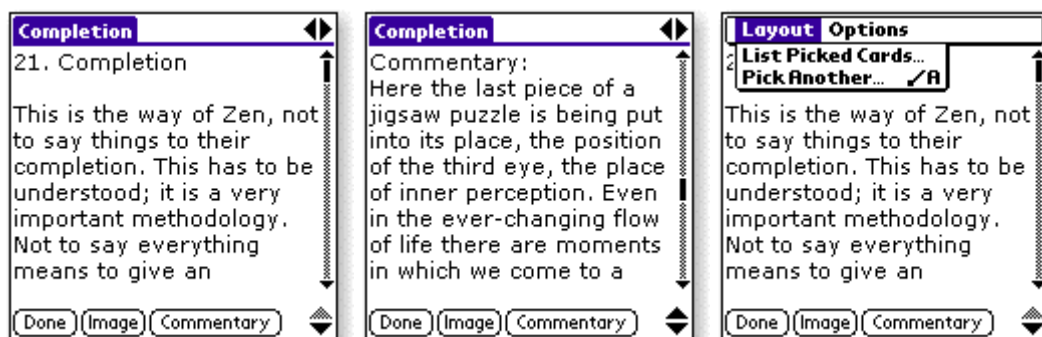


Pressing the **Image** button on the Layout screen will display the picture for the currently selected card.

Pressing the **Text** button will display the card description.

Pressing the **Done** button will return you to the Layout screen.

Viewing Descriptions



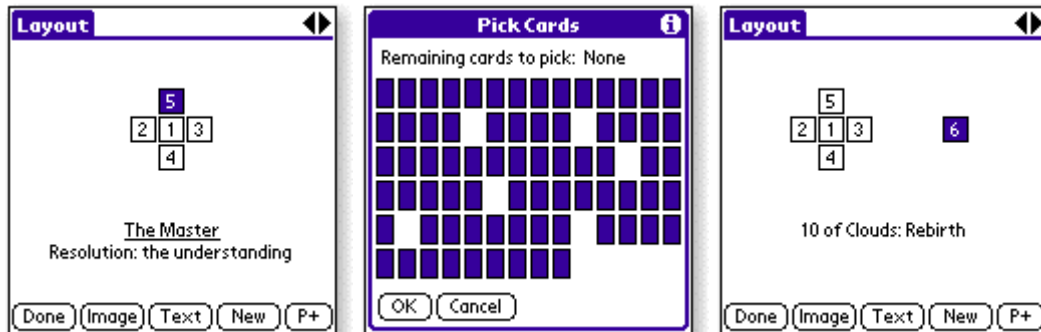
Pressing the **Text** button on the Layout screen will display the description for the currently selected card.

Pressing the **Image** will display the card image.

Pressing the **Commentary** button will scroll to the commentary section of the card description.

Pressing the **Done** button will return you to the Layout screen.

Adding Cards to the Layout

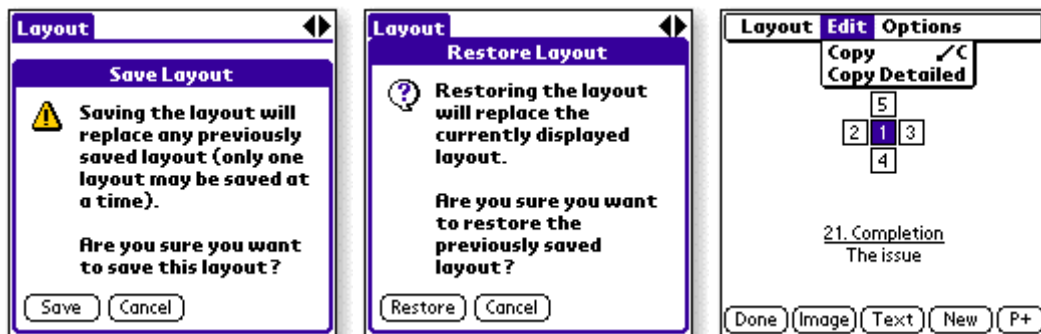


Choosing the *Pick Another* menu options or pressing the **P+** button allows you to add another card to the layout. This is often useful for clarification of another card.

The Pick Cards dialog is displayed, with the previously picked cards removed, allowing additional cards to be drawn from the deck.

Press the **OK** or **Cancel** button to close the Pick Cards dialog.

Saving the Layout



You can save a single layout for recall at a later time. This is often useful when you're currently reviewing or working with a layout and you'd like to create another layout for someone else.

Choosing the *Save Layout* menu option from the Layout screen will prompt you to save the current layout. Since only one layout can be saved at a time, this will overwrite any previously saved layout.

To recall the previously saved layout, choose the *Restore Layout* menu option. The current layout will be overwritten or lost.

The *Swap* menu option will exchange the current layout with the previously saved layout allowing you to switch back and forth between two layouts.

The *Copy* menu option will copy the cards picked for the layout to the clipboard so that this information can be transferred to another application for saving or printing. The *Copy Detailed* menu option also copies a description of the layout and the meaning of each position within the layout.

Beaming the Layout

You can share your layout with another person by choosing the *Beam* menu option from the Layout screen. This is useful when two or more people want to review and discuss the same reading.

If the other person does not have Zen Tarot already installed on their Palm OS handheld, you can beam the whole program to them using the *Beam Zen Tarot* menu option from the main title screen. This is discussed in the Beam Zen Tarot section.

Frequently Asked Questions

If you don't find an answer to your question here, please check the web for an updated FAQ at <http://www.hudren.com/products/zentarot/guide/faq.html>.

General FAQ

I've entered the registration code, why isn't it being accepted?

You must enter the registration information exactly as it appears in the confirmation email. The code will not work if they do not match exactly, including letter case, spaces, and punctuation (including hyphens). If you are still experiencing problems, please contact us at support@hudren.com.

Is there an easier way to enter the registration code?

Yes, by copying all of the registration information (in particular, the three lines containing the name, email, and code values) to the clipboard of the handheld device and then switching to the Zen Tarot application. For example, you might use the *Palm Desktop* software to create a memo containing the registration information by copying and pasting it from the registration email. After syncing, open this memo on the handheld and copy the registration information to the clipboard. When you switch to the Zen Tarot application, the Registration dialog will be displayed with the registration information already entered into the appropriate fields.

What is the upgrade policy for Zen Tarot?

Registered users are entitled to use all future versions of Zen Tarot, so be sure to periodically check our website for free updates.

Why am I experiencing problems printing the PDF version of this user guide?

This user guide was created using the latest version of Adobe Acrobat and earlier versions may not be able to view or print it properly. You can download the most recent version of Acrobat Reader for free from the Adobe website at <http://www.adobe.com/products/acrobat/readstep.html>.

Are there plans for releasing the software in languages other than English?

We are currently looking into having the program and other user documentation translated into additional languages, as well as supporting more languages for the card descriptions.

Palm OS-related FAQ

When I beam Zen Tarot to another user, why do they get the message "this operation requires a text database" when trying to enter either Browse or Layout mode?

When Zen Tarot is beamed from the Palm OS Launcher, only the program is transferred, not the text or image databases. Use the *Beam Zen Tarot* menu option from the main title screen to successfully beam the necessary Zen Tarot components to another device.

When I beam a Zen Tarot image database to another user, why can't they view the card images?

Each image database is optimized to work for specific Palm OS-based devices, and the image database for your device may not be compatible with the other device. (In general, lower definition image databases can be viewed on a wider selection of devices.) If necessary, an appropriate Image Pack can be downloaded from our website at <http://www.hudren.com/download>.

The card images look terrible, are nicer looking ones available for my device?

Probably. The image database included with the program download are basic black and white, low-resolution images that can be viewed on all Palm OS 3.0 and later devices. Most devices in use today are capable of displaying grayscale or color images that show much more detail. These Image Packs are downloadable from our website at <http://www.hudren.com/download> and contain image databases optimized for your specific type of display.

Why doesn't Zen Tarot find the text or image databases located on a storage card?

Make sure the text and image databases are stored in the default directory for prc/pdb files, which is typically the "/PALM/Launcher" directory, although some manufacturers may place these types of files in a different directory. Zen Tarot queries each card for the specific name of this directory and then only searches in that location for the text and image databases. (The Copy Zen Tarot dialog will transfer these databases from internal memory to the correct directory on the expansion card.)

Revision History

Version 1.0

- Initial release

Version 1.0.1

- Added support for VFS-enabled expansion cards such as SD/MMC and MemoryStick

Version 1.1

- Added support for the Palm 5-way navigator button
- Added ability to beam databases stored on VFS expansion cards
- Added ability to copy individual databases to and from VFS expansion cards
- Added large font for viewing card descriptions
- Added menu activation when tapping at the top of the main title screen
- Added clipboard support for automatically entering registration info
- Added Edit menu to Registration dialog
- Added high density icons
- Renamed text and image database files to have .prc extension instead of .pdb
- Fixed reset when invoking Global Find when Zen Tarot was not the active application and Global Find was enabled in Preferences
- Fixed bug when selecting 'The Fool' from Global Find displayed the Layout screen instead of the card description
- Fixed bug redrawing Registration dialog after viewing tips that occurred on some devices
- Fixed bug where selected text region was not cleared when switching to another card description

Version 1.1.1

- Added ability to swap the current and saved layouts
- Added ability to copy the current layout or picked cards to the clipboard

- Added icons for the face cards on the Browse screen
- Modified to show the layout when receiving one

Registration

Zen Tarot is distributed as a shareware program meaning that you may use this program for a brief trial or evaluation period. If you continue to use this program for more than thirty (30) days, however, you are required to register this software for a fee.

Full registration details for this software are available on our website at <http://www.hudren.com/register>.

While the program downloads and registrations are available for different languages, the registration code will work for all available languages. Please register for the language you will primarily use so that we may understand the level of interest for each language.

Once we have been notified of your registration (which can sometimes take up to 24 hours or longer), we will send you a registration confirmation email containing your registration code. The Reminder dialog will no longer be displayed once this information is entered into the Registration dialog on your handheld. Saving this information in a safe place is a good idea as it may become necessary to enter it again when re-installing the software.

Unfortunately, email delivery is not 100% reliable, and increased anti-spamming efforts often block the registration email without notifying us that the email was not delivered. Also, we occasionally receive email addresses that were not entered correctly or addresses for email accounts with full quotas that are not accepting new emails. Many people have even deleted the registration email incorrectly thinking it was spam.

We take the responsibility of delivering your registration code very seriously and most are delivered within twenty (20) minutes of an order being placed (may be longer if the order was placed on a website other than our own). If you have not received your registration code within two (2) business days, please contact us so that we can resend it or make other arrangements to get it to you.

You must enter the registration information exactly as it appears in the confirmation email. The code will not work if they do not match exactly, including letter case, spaces, and punctuation (including hyphens). Please do not hesitate to contact us at support@hudren.com if you have any questions or experience any problems entering your registration code.

Starting with Zen Tarot 1.1, an alternative method for entering the registration information is available by copying all of the registration information (in particular, the three lines containing the name, email, and code values) to the clipboard of the handheld

device and then switching to the Zen Tarot application. For example, you might use the *Palm Desktop* software to create a memo containing the registration information by copying and pasting it from the registration email. After syncing, open this memo on the handheld and copy the registration information to the clipboard. When you switch to the Zen Tarot application, the Registration dialog will be displayed with the registration information automatically entered into the appropriate fields.

If you have misplaced or discarded your registration information and need it again, you may visit our website at <http://www.hudren.com/support> to request that it be emailed to you.

Registered users are entitled to use all future versions of Zen Tarot, so be sure to periodically check our website for free updates.

Thank you for supporting this product by registering the software.

Support

Support for Zen Tarot is provided via email. Please check our website for program and documentation updates as the latest version might solve any problems you're experiencing or answer any questions you may have. Remember, registered users are entitled to use all future versions free of charge.

Please send any questions or comments to support@hudren.com and include the following information:

- Your name
- Your e-mail address
- The model of your handheld
- The version of Zen Tarot
- If you're reporting a bug in the software, please include the steps needed to recreate the problem

We will respond as quickly as possible. Thank you for your patience.

Web Links

The latest version of this software can be found on the web at <http://www.hudren.com/products/zentarot>.

The latest Zen Tarot documentation can be found at <http://www.hudren.com/products/zentarot/guide>.

Adobe Acrobat Reader is required to view or print PDF files and can be downloaded for free from the Adobe [website](#).

About Osho

For more information:

www.osho.com

A comprehensive web site in different languages, featuring Osho's meditations, books and tapes, an online tour of the meditation resort at Osho Commune International, travel information, Osho information centers worldwide, and selections from Osho's talks.

Osho International

New York

email: oshointernational@oshointernational.com

www.osho.com/oshointernational